

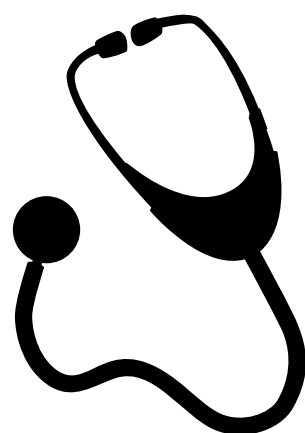
WHERE DO I GO FROM HERE?



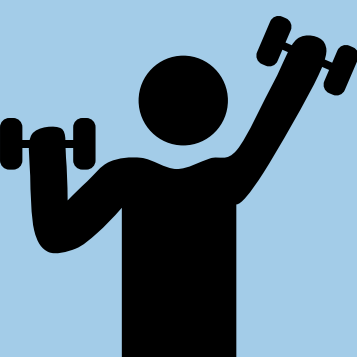
PT's ROLE IN DISCHARGE RECOMMENDATIONS

LONG TERM ACUTE CARE? (LTACH)

- a continuation of hospital-level care due to medical complexity in a longer-term setting
- complex medical requirements needed
- offer intense, constant care



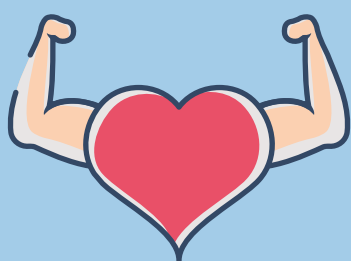
ACUTE INPATIENT REHAB? (AIR)



- receive multi-disciplinary therapy (PT, OT, SLP)
- timing: minimum of 3 hours a day, 5 days/week
- goal: restore physical independence, prevent hospital re-admission
- pt has a medical condition which requires physician care provided 24 hours/day, 7 days/week

National average
length of stay

16 days



Statistics: Discharge
Rate to Community

76%



SKILLED NURSING FACILITY? (SNF)

- non-intensive multi-disciplinary therapy (PT, OT, SLP)
- therapy does not occur every day
- timing: average of 1-2 hours of skilled therapy services
- attending physician, PA, or NP only required to visit patient once every 30 days

Statistics: Discharge
Rate to Community

40%



National average
length of stay

28 days



Discussions with your medical team, insurance coverage, home setup, possible caregiver support at home, and progress in physical therapy are key determiners for best discharge location.